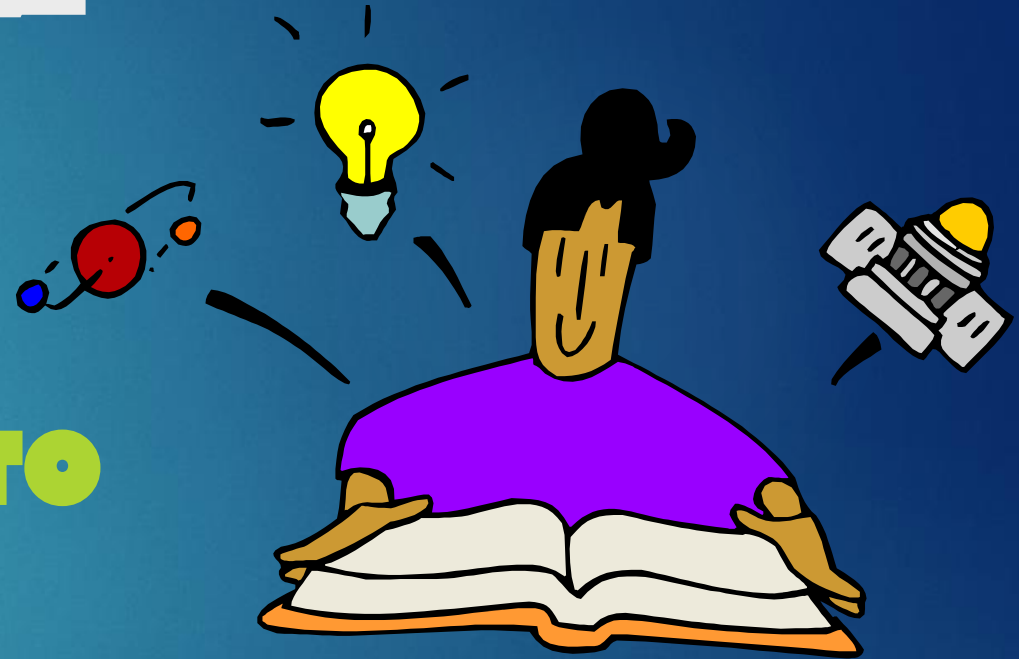


Freshmenology

101

**EVERYTHING YOU NEED TO
KNOW TO SUCCEED IN
HIGH SCHOOL**

WELCOME CLASS OF 2026!



CLASS OF 2026 REQUIREMENTS

*All requirements in this presentation are subject to legislative changes at any given time

I. A total of 24 credits are needed for graduation in order to meet the criteria for a traditional standard diploma. These credits must include:

ENGLISH:	4 credits
MATHEMATICS:	4 credits (must include Algebra I and Geometry)
SCIENCE:	3 credits (must include 1 Biology and 1 Physical Science credit)
SOCIAL STUDIES:	3 credits (must include 1 World History, 1 American History, 1/2 American Government, 1/2 Economics credit)
PHYSICAL EDUCATION:	1 credit (1 credit of HOPE or 1/2 credit of PERSONAL FITNESS and 1/2 credit of a P.E. class)
PERFORMING/PRACTICAL FINE ART:	1 credit
ELECTIVES:	8 credits
	24 credits total

II. A cumulative grade point average of 2.0 is needed in ALL high school credit courses.

III. A passing score is needed on the 10th grade FAST ELA (English Language Arts).

IV. **MUST** pass the Algebra I EOC or GEO EOC (END OF COURSE EXAM)

- ▶ Students must participate in EOC assessments and the results will determine final course grades
- ▶ EOC's include: Algebra I, Biology I, Geometry, and US History – 30% of course

V. **20** hours of community service/volunteer hours completed in high school are required before graduation.

VI. **MUST** earn credit in at least **one online** course.

IMPORTANCE OF GRADES

- ✓ Handing in classwork/homework = good grades.
- ✓ Colleges look at grades from freshman – junior years as well as the rigor of the senior year, so start out strong!
- ✓ Student athletes and club members must maintain at least a 2.0 cumulative GPA to participate.
- ✓ Students have to repeat a required course if they fail it.
- ✓ Time management is important.
- ✓ Grade point averages are CUMULATIVE and begin with the first high school course taken even if it was in middle school.

▶ **FRESHMAN YEAR IS IMPORTANT!!!!**

GRADES ARE EARNED NOT NEGOTIATED!!!!

- Please monitor grades throughout the quarter grading period.
 - Quarter grades are important, but colleges will only see the semester grades.
- Do not expect “extra credit” or to be allowed to “make up” long ago missed assignments when you realize that your grade is not what you would like it to be.
- Be diligent about completing each and every assignment/homework/quiz/test to the best of your ability. There is no substitute for hard work!



HOW ARE GRADE POINT AVERAGES (GPA) AND HONOR POINT AVERAGES (HPA) CALCULATED?

ALL LETTER GRADES ARE AWARDED POINTS

Regular Classes	Honors Classes	AP/AICE/Dual Enrollment Classes
A = 4.00	A = 4.500	A = 6.00
B = 3.00	B = 3.375	B = 4.50
C = 2.00	C = 2.250	C = 3.00
D = 1.00	D = 1.125	D = 1.50
F = 0.00	F = 0.000	F = 0.00



How To Earn Credit? (For Non-EOC courses)

- ▶ Each time you pass a class for the semester, which is half of a year, you earn half of a credit.



- ▶ If you take 7 classes each semester and you pass each class, you can earn 3.5 credits for each semester, which means 7 credits for the year.



SEMESTER EXAMS COUNT!

- ▶ To receive a passing grade for the semester, you must pass 2 of the 3 grades used to calculate the semester average.
- ▶ A Semester consists of 2 nine weeks & a final exam. Semester average = 1st 9 weeks (40%) + 2nd 9 weeks (40%) + Final Exams count for 20% of your semester grade.
- ▶ If you are absent 10 days in a class, you must pass the final exam!

First Quarter/9 Weeks	Second Quarter/9 Weeks	Semester Exam
40%	40%	20%

* NON-EOC CLASSES

PROMOTION REQUIREMENTS

- ▶ Students are automatically promoted to the next grade level at the end of each year in high school.

WARNING!!!!!!

- ▶ This DOES NOT mean that your child is on track for graduation. Credits lost must be recovered before graduation.
- ▶ Remember that in high school your child needs to earn credits toward graduation regardless of what grade level they are considered.
- ▶ Edgenuity opportunities are available for students that are credit deficient through our on-campus evening lab or summer school.

How to Earn Credit in an EOC Course

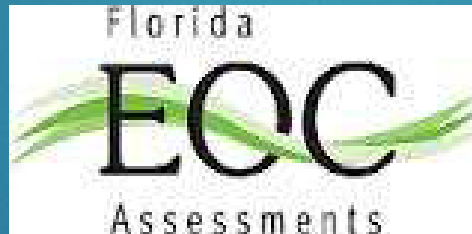
- ▶ All EOC courses will be year-long courses with 1.0 credit awarded. EOC courses include Algebra 1, Geometry, Biology and US History
- ▶ The Algebra 1 EOC or concordant score is a specific graduation requirement as it is considered the state's mathematics assessment – see below:

- ▶ Concordant Test Scores for class of 2026:

- ▶ ACT MATH – 16

- ▶ SAT MATH – 420

- ▶ GEO EOC - Level 3



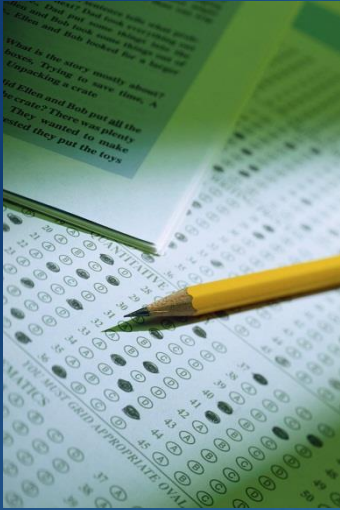
PERT – does not count!!!!

PSAT NMSQT - 430

- ▶ In order for a student to earn credit in an EOC class, students must sit for the exam at the end of the year.
 - ▶ If a student does not sit for the EOC at the end of the school year, the final grade will result in the student receiving an F for the entire credit.

High Stakes Testing

Agree with it or not, it is here !!!!



HIGH SCHOOL TESTS

FAST ELA Reading 10th

Algebra I EOC

Geometry EOC

Biology EOC

US History EOC

COLLEGE READY TESTS

PSAT

SAT

ACT

P.E.R.T.

OTHER TESTS FOR HIGH SCHOOL STUDENTS.....

Industry Certifications

Advanced Placement

A.I.C.E.

SAT Subject Area Tests

CPR

AND AFTER HIGH SCHOOL.....

GRE

LSAT

MCAT

BOARD TESTING

ETC, ETC, ETC, ETC.....

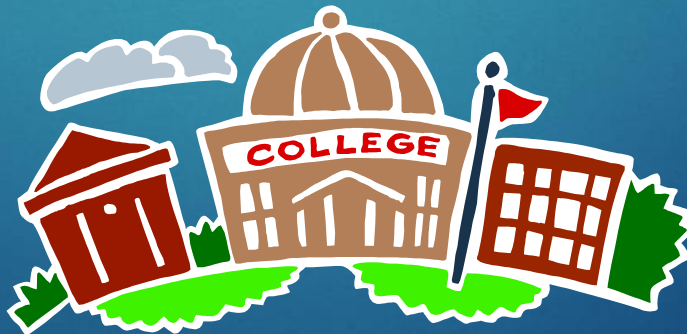


Take Standardized Tests Seriously!!

- ▶ Determines Intensive Reading, Honors, AICE, and AP for next year.
- ▶ All FAST Level 1 and 2 students will be placed into Intensive Reading as mandated by the state.
- ▶ Graduation Requirement for FAST ELA and ALG I EOC or concordant scores.

MINIMUM STATE OF FLORIDA ADMISSIONS REQUIREMENTS TO A 4 YEAR UNIVERSITY

- ▶ A minimum of 2 credits of the same foreign language (Florida Bright Futures Scholarship Program requires this as well)
- ▶ At least 4 sciences completed throughout HS. Chemistry and/or Physics are highly encouraged and recommended.
- ▶ At least 4 math credits completed throughout HS
- ▶ Honors, AP, AICE, Dual Enrollment classes (any classes that contain rigor and challenge)



This is from Florida State University's Admission Website

Required High School Course Units The units listed below represent the minimum required for admission consideration:

4 units of English, at least three with substantial writing requirements

4 units of mathematics at the Algebra I level and higher

3 units of natural science, at least two with laboratory experience

3 units of social science

2 sequential units of the same foreign language or ASL

2 elective units, preferably in the above subject areas

18 ACADEMIC CREDITS (MINIMUM!!!!!!)

Satisfying these minimum required units does not guarantee admission.

The typical student accepted to Florida State has:

4.5 units of English 5.5 units of math 4.5 units of natural science 5 units of social science 3.5 units of foreign language

23 ACADEMIC CREDITS (TYPICAL INCOMING FRESHMAN!!!!)



RECOMMENDATIONS FOR A SUCCESSFUL FRESHMAN YEAR

- ▶ **ATTEND SCHOOL DAILY – TARDIES WILL NOW COUNT!!!!**
 - ▶ Attendance is directly tied to driver's permits and licenses.
- ▶ **BE ORGANIZED**
- ▶ **TURN IN ALL ASSIGNMENTS**
- ▶ **STUDY A SET AMOUNT OF TIME EACH DAY WHETHER YOU HAVE HOMEWORK OR NOT**
- ▶ **EARN/MAINTAIN GOOD GRADES**
- ▶ **FOLLOW PROGRESS ON SIS**
- ▶ **DECIDE THAT EDUCATION IS IMPORATNT**
- ▶ **GET INVOLVED: Athletics, clubs, and community service opportunities**
 - ▶ All are available on our website.

Jupiter High School

WWW.JUPITERHIGHSCHOOL.ORG

▶ For more information please visit our website:

▶ Go to www.jupiterhighschool.org

▶ Click on Counseling/Guidance

▶ Click on the tab "9th -11th grade"



▶ <https://sites.google.com/palmbeachschools.org/rising-seniors-9th-11th/not-yet-a-senior-your-need-to-know>

This website has information on community service, clubs & activities, dual enrollment, college & career research and so much more!

A banner image with a white border. The background shows several hands of different skin tones holding a yellow ribbon. Overlaid on this image is the text "College and More" in a large, white, serif font.

College and More



Your Need to Know!

[A Junior & University Bound?](#)

[Undecided about Your Next Step?](#)

[SAT & ACT](#)

[AICE & AP](#)

[Dual Enrollment](#)

[Getting Involved](#)

[Graduation Requirements](#)

[Florida Shines & My Career Shines](#)

[SIS Tips & Hints](#)



SIS GATEWAY

An Invaluable Academic Resource

1. CHECK SIS FREQUENTLY
2. ASK YOUR CHILD FIRST IF YOU HAVE ANY QUESTIONS ABOUT THEIR GRADES
3. USE THE TEACHER EMAIL LINK IF YOU HAVE ANY QUESTIONS OR CONCERNS ABOUT YOUR CHILD'S PERFORMANCE OR OTHER ISSUES IN THE CLASSES
4. IF A CONCERN REMAINS, PARENT/TEACHER/STUDENT CONFERENCES CAN BE SCHEDULED THROUGH YOUR CHILD'S SCHOOL COUNSELOR.
 - ▶ CONFERENCES ARE HELD AFTER SCHOOL ON THURSDAYS.



- ▶ **YOUR STUDENT CAN FIND THEIR GRADUATION STATUS & GPA/CLASS RANK**
- ▶ **A HISTORY OF THEIR ACADEMICS**
- ▶ **THEIR TEST SCORES**
- ▶ **THEIR COMMUNITY SERVICE HOURS**
- ▶ **THEIR REPORT CARDS**

WHO TO TURN TO.....

- ▶ **SCHOOL COUNSELORS** - academic issues, volunteer hours, college/career planning, and schedule issues.
- ▶ **MENTAL HEALTH TEAM** - personal issues, social/emotional issues, crisis intervention.
- ▶ **ASSISTANT PRINCIPALS** - discipline issues, tardies, absences, electronic device confiscation
- ▶ **STUDENT SERVICES OFFICE** – early release, driving decals, lost and found
- ▶ **TESTING COORDINATOR** – FAST/EOC's
- ▶ **ATHLETIC DIRECTOR** – sports (packets), activities - [Jupiter Athletics Site](#)
- ▶ **AICE COORDINATOR** – all things AICE - <http://www.jhsaice.com/>
- ▶ **ACADEMY COORDINATOR** – all academy concerns/questions - https://jhs.palmbeachschools.org/school_info/choice_and_career_academy_programs

PARTNERS and PARENTS

Parents, Guardians, & JHS Friends

- ▶ Please partner with us in developing your child. In just 4 short years they will be moving from high school into college, the military, vocational school or the work force.
- ▶ Let's help them become problem solvers and be able to advocate for themselves.
- ▶ Working together, we can make them as prepared as possible for the next chapter in their lives.

Jupiter High School Counseling Team

Alpha Name

Email Address

- ▶ A-Br B. Wasserman Bruce.Wasser@palmbeachschools.org
- ▶ Bu-Dia H. Turney Haley.Turney@palmbeachschools.org
- ▶ Dib-Go N. Daly Nicole.Daly@palmbeachschools.org
- ▶ Gr-Kip G. Guillaume Glorie.Guillaume@palmbeachschools.org
- ▶ Kir-Me M. Thornton Meghan.Thornton@palmbeachschools.org
- ▶ Mi-Rei H. Woeber Heather.Woeber@palmbeachschools.org
- ▶ Rej-Ste A. Hand Amy.Hand@palmbeachschools.org
- ▶ Sti-Z H. DeCabia Holly.DeCabia@palmbeachschools.org

ESOL & Bilingual Counselors

- ▶ G. Gavrilovic – Gabrielle.Gavrilovic@palmbeachschools.org
- ▶ N. Diaz - Natalie.Diaz@palmbeachschools.org

504 Designee

- ▶ R. Capparelli – Roisin.Capparelli@palmbeachschools.org

ESE Coordinator

- ▶ L. Durso Byers - Lorie.Dursobyers@palmbeachschools.org